

# 4 BEDROOM HOME THE HARRINGTON

**PLOTS 3, 9, 85, 86, 87, 90, 95, 96 & 111**

## GROUND FLOOR

Kitchen	3.86m x 3.05m	12'8" x 10'0"
Family	4.11m x 3.20m	13'6" x 10'6"
Dining	3.56m x 3.05m	11'8" x 10'0"
Living Room	6.75m x 3.70m	22'2" x 12'2"

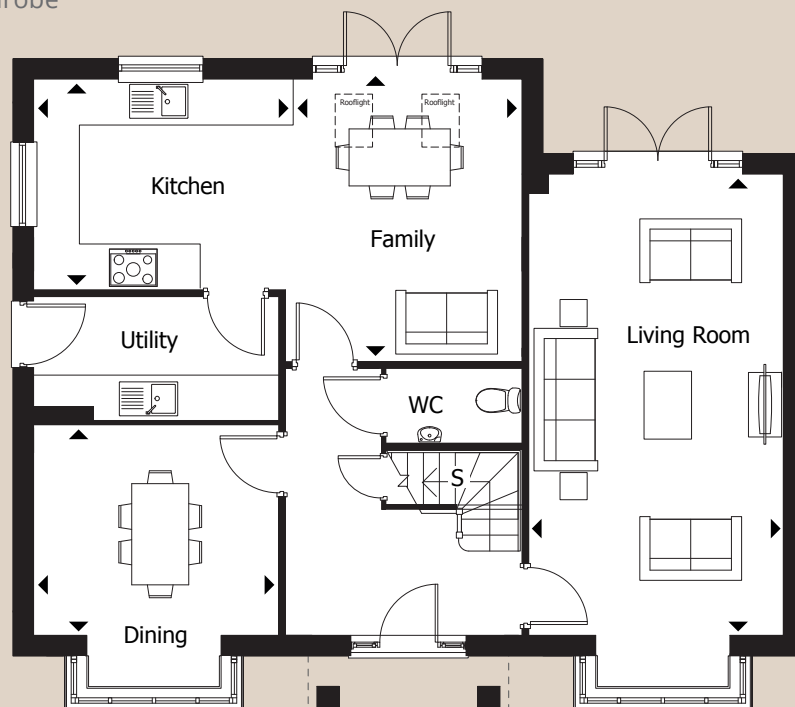
## FIRST FLOOR

Bedroom 1	5.29m x 3.70m	17'4" x 12'2"
Bedroom 2	3.74m x 3.74m	12'3" x 12'3"
Bedroom 3	3.73m x 2.89m	12'3" x 9'6"
Bedroom 4	3.55m x 2.75m	11'8" x 9'0"

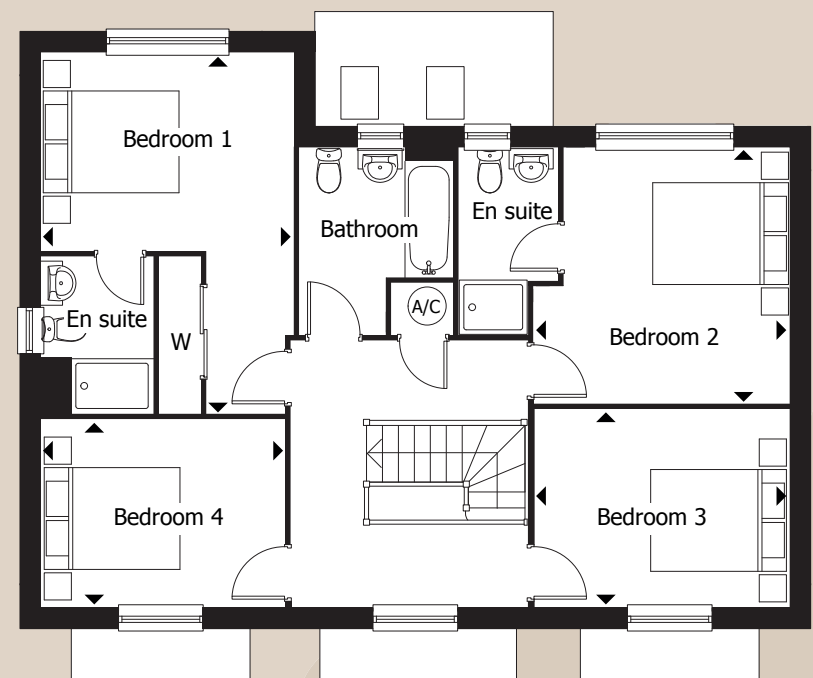


Computer generated image depicts The Harrington, plot 86, indicative only

S = Store  
AC = Airing cupboard  
W = Wardrobe



GROUND FLOOR



FIRST FLOOR