



**KINGSBURY PARK**  
LUTTERWORTH

# 4 BEDROOM DETACHED HOME *The Harrington*

PLOTS 166, 173

## GROUND FLOOR

Kitchen	3.86m x 3.05m	12'8" x 10'0"
Family	4.11m x 3.44m	13'6" x 11'3"
Dining	3.56m x 3.05m	11'8" x 10'0"
Living Room	6.75m x 3.70m	22'2" x 12'2"

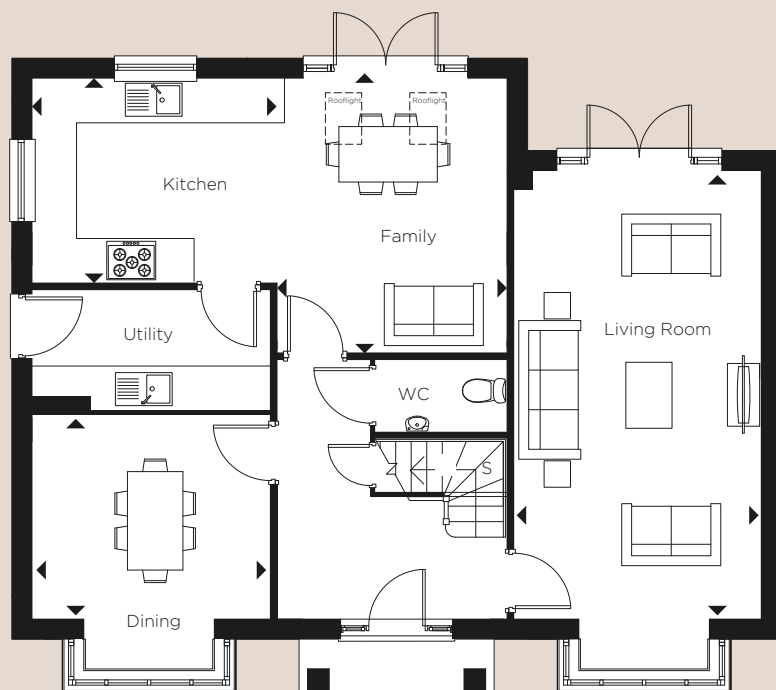
## FIRST FLOOR

Bedroom 1	4.14m x 3.70m	13'5" x 12'2"
Bedroom 2	3.74m x 3.74m	12'3" x 12'3"
Bedroom 3	3.74m x 2.89m	12'3" x 9'6"
Bedroom 4	3.55m x 2.75m	11'8" x 9'0"

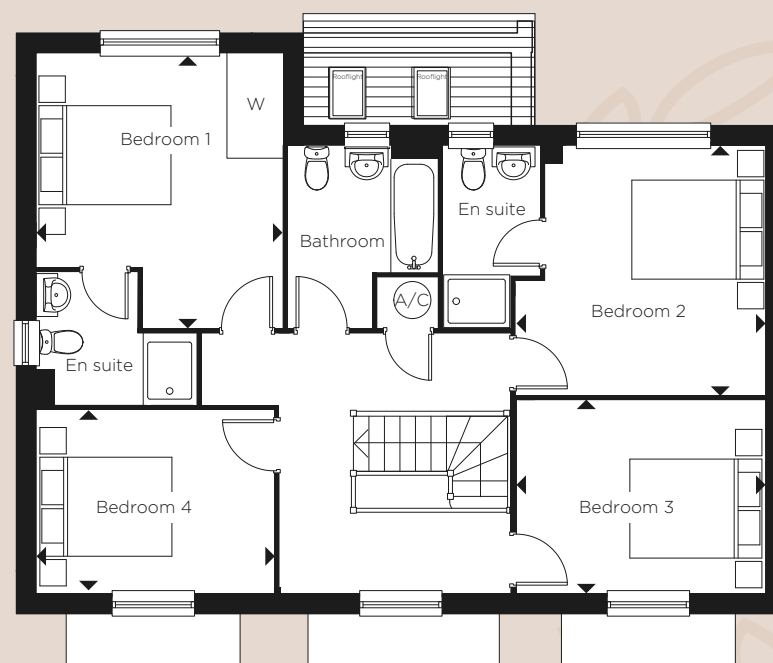


Computer generated image depicts The Harrington, indicative only

**S** = Store  
**A/C** = Airing cupboard  
**W** = Wardrobe



GROUND FLOOR



FIRST FLOOR

# THE HARRINGTON

FOUR BEDROOM DETACHED HOME

PLOTS 9, 12, 54



LAUNTON MEWS

LAUNTON



Computer generated image depicts typical Mulberry housetype, The Harrington, indicative only

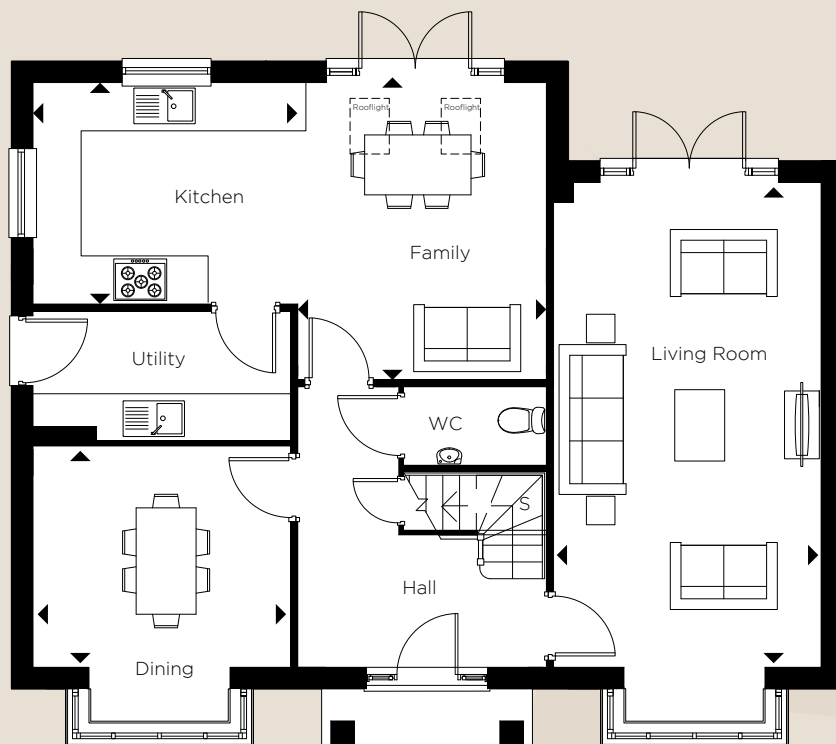
## GROUND FLOOR

Kitchen	3.86m x 3.05m	12'8" x 10'0"
Family Room	4.11m x 3.44m	13'6" x 11'3"
Dining Room	3.56m x 3.05m	11'8" x 10'0"
Living Room	6.75m x 3.70m	22'2" x 12'2"

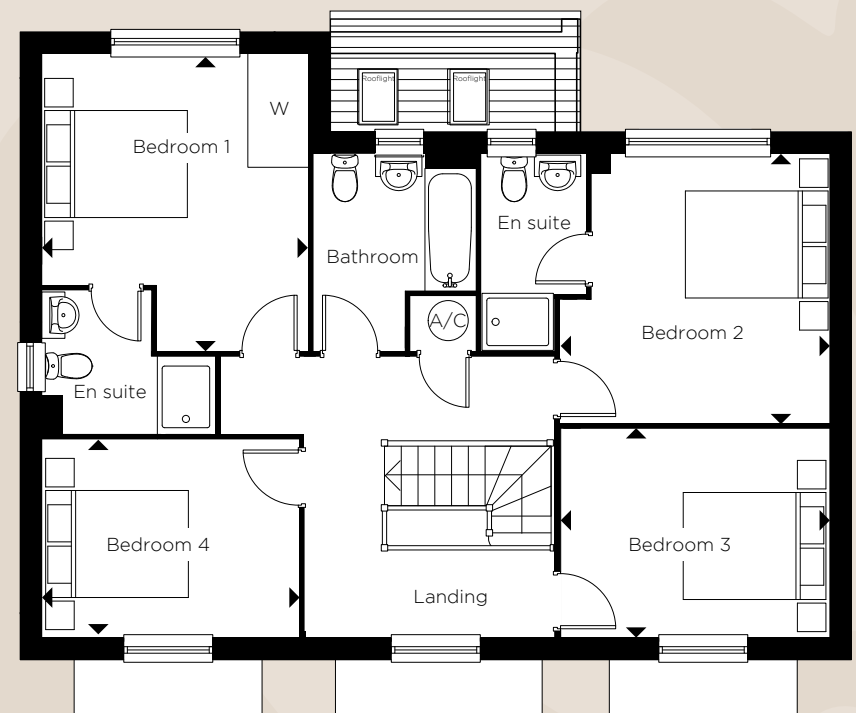
## FIRST FLOOR

Bedroom 1	4.14m x 3.70m	13'5" x 12'2"
Bedroom 2	3.74m x 3.74m	12'3" x 12'3"
Bedroom 3	3.74m x 2.89m	12'3" x 9'6"
Bedroom 4	3.55m x 2.75m	11'8" x 9'0"

S = Store



GROUND FLOOR



FIRST FLOOR

# THE HARRINGTON

FOUR BEDROOM DETACHED HOME  
PLOTS 24, 39, 41 & 45\*



**MAULDEN RIDGE**  
MAULDEN



Computer generated image depicts The Harrington, indicative only

## GROUND FLOOR

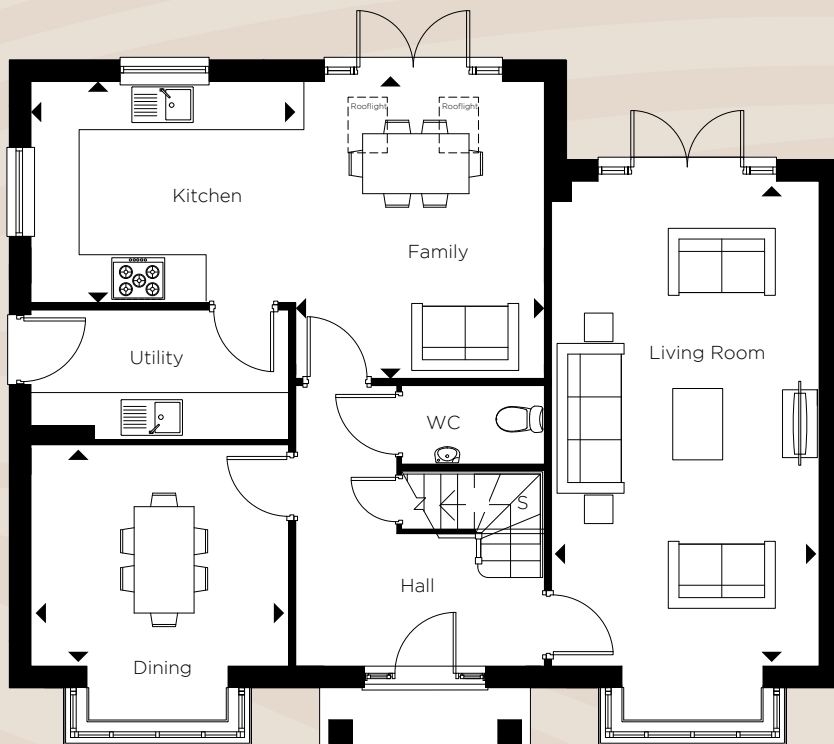
Kitchen	3.86m x 3.05m	12'8" x 10'0"
Family Room	4.11m x 3.44m	13'6" x 11'3"
Dining Room	3.56m x 3.05m	11'8" x 10'0"
Living Room	6.75m x 3.70m	22'2" x 12'2"

## FIRST FLOOR

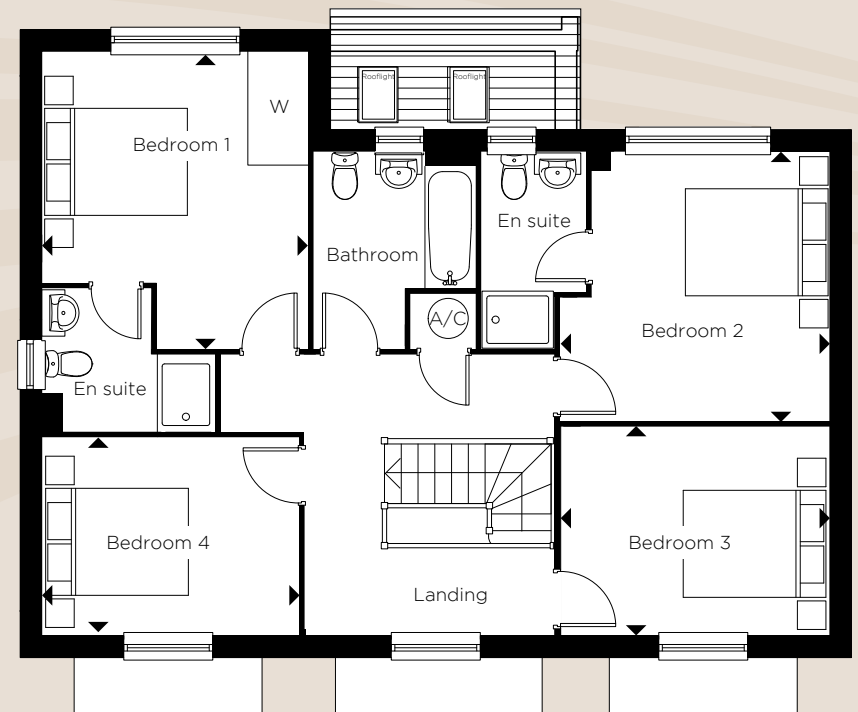
Bedroom 1	4.14m x 3.70m	13'5" x 12'2"
Bedroom 2	3.74m x 3.74m	12'3" x 12'3"
Bedroom 3	3.74m x 2.89m	12'3" x 9'6"
Bedroom 4	3.55m x 2.75m	11'8" x 9'0"

\* handed plots

S = Store  
A/C = Airing cupboard  
W = Wardrobe



GROUND FLOOR



FIRST FLOOR



# 4 BEDROOM HOME THE HARRINGTON

PLOTS 3, 9, 85, 86, 87, 90, 95, 96 & 111

## GROUND FLOOR

Kitchen	3.86m x 3.05m	12'8" x 10'0"
Family	4.11m x 3.20m	13'6" x 10'6"
Dining	3.56m x 3.05m	11'8" x 10'0"
Living Room	6.75m x 3.70m	22'2" x 12'2"

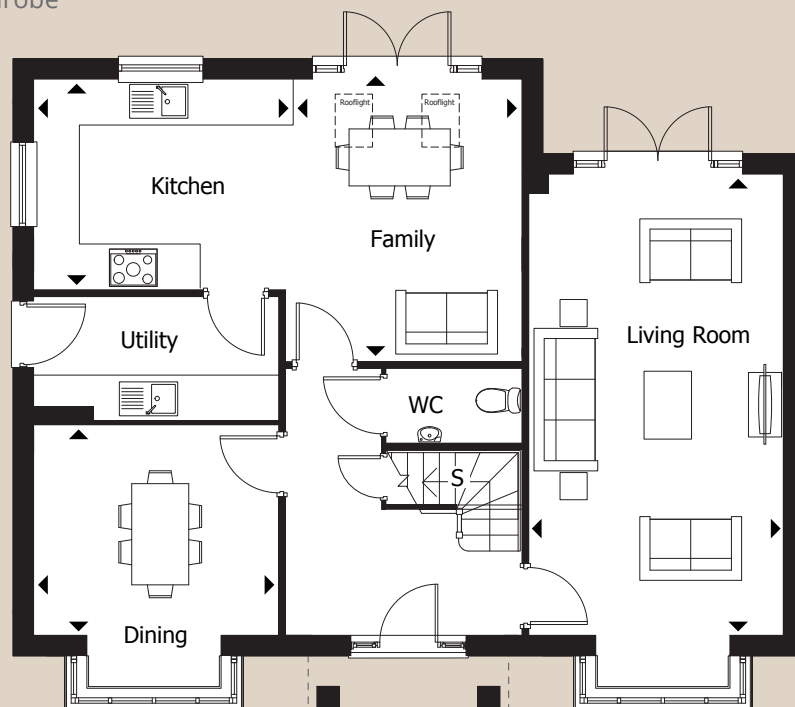
## FIRST FLOOR

Bedroom 1	5.29m x 3.70m	17'4" x 12'2"
Bedroom 2	3.74m x 3.74m	12'3" x 12'3"
Bedroom 3	3.73m x 2.89m	12'3" x 9'6"
Bedroom 4	3.55m x 2.75m	11'8" x 9'0"

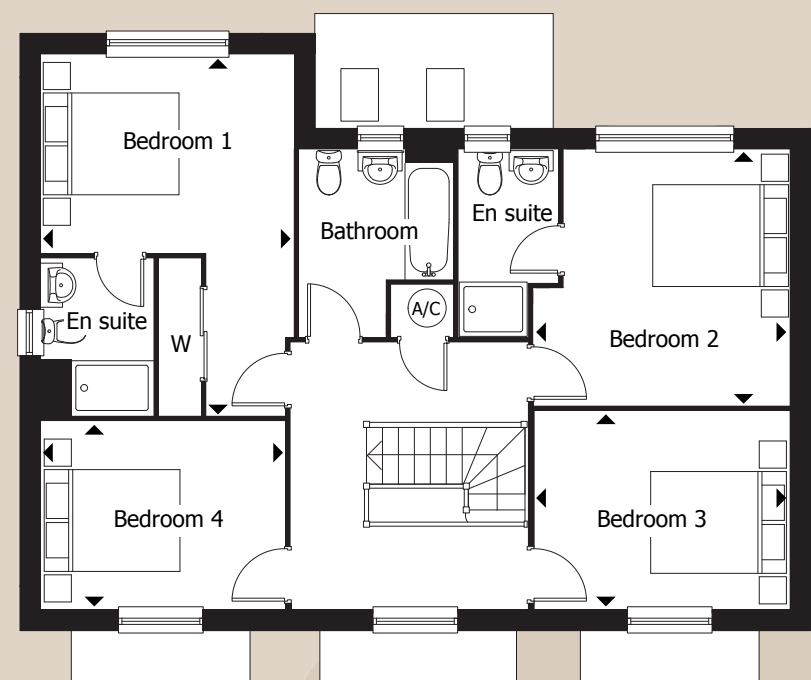


MEADOW VIEW FIELDS  
MOULTON

S = Store  
AC = Airing cupboard  
W = Wardrobe



GROUND FLOOR



FIRST FLOOR